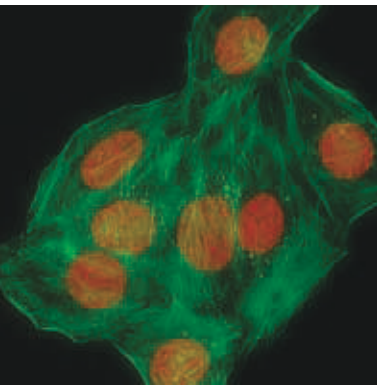


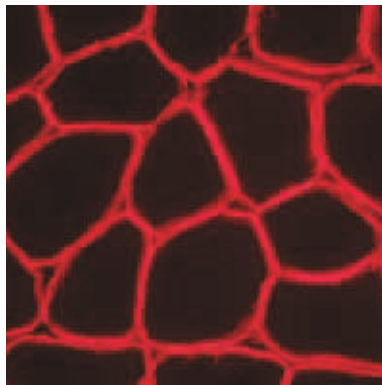
FLUOLED® 2CFW

LED illumination for fluorescence microscopy

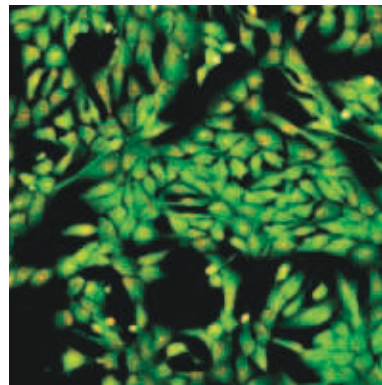
- Fluorescence microscope illuminator including epi-condensor system and fluorescence filters.
- Transform a bright field microscope into a fluorescence microscope within minutes.
- No fiber guide replacement, no bulb replacement and no hazardous material in the laboratory.



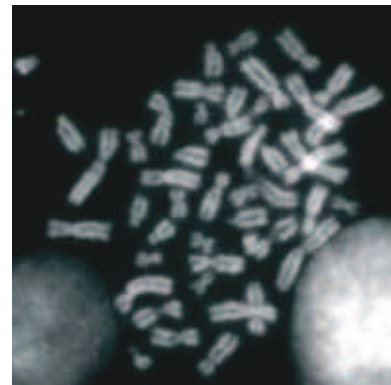
Hela cells, Tubulin and DNA



Muscle



Mesothelium



Methaphase

General Characteristics

FLUOLED® 2CFW is a fast and reliable solution ideal for routine fluorescence microscopy. It allows to transform your brightfield microscope into a fluorescence microscope using light emitting diodes (LED) as a source for excitation.

Different from other LED systems, **FLUOLED® 2CFW** includes a complete vertical illuminator with fluorescence filters mounted on a filter wheel, so fluorescence becomes available even on microscopes where original illuminators are not available any more. The vertical illuminator has been designed specifically to match the features of LEDs, therefore avoiding the use of light fibers and providing best field uniformity at the specimen.

The illuminator is easily installed between microscope stand and tube within minutes, not requiring any alignment of the light source.

The machined aluminum body offers increased stability and protection of the optical and electronic system components. Optical components like filter cubes and LED cassettes are typically installed at factory.



FLUOLED® 2CFW is designed for infinite focus optical microscopes providing a 22 mm field of view and accepts two LED cassettes for two color fluorescence.

LED cassettes which are self-aligning and maintenance free.

Fluorescence excitation is provided by long lasting light emitting diodes (LEDs) mounted into modular cassettes, freely interchangeable and together with additional filter sets can be added to the system at any time.

FLUOLED® 2CFW light sources:

UV	365 nm
ROYAL BLUE	450 nm
BLUE	480 nm
GREEN	535 nm
YELLOW	590 nm
RED	630 nm

(more colours available on request)

Dimensions (mm) 2CFW	293 (L) x 130 (W) x 64 (H)
Weight (Kg) 2CFW	3,8 Kg
Power	100-240VAC 50/60Hz universal voltage
Operating temperature	5°C to +40 °C (41°F to 104°F)
Typical LED life time	30.000 hrs

Published by Fraen Corporation.

All data contained in this document is the property of Fraen Corporation and may change without notice.